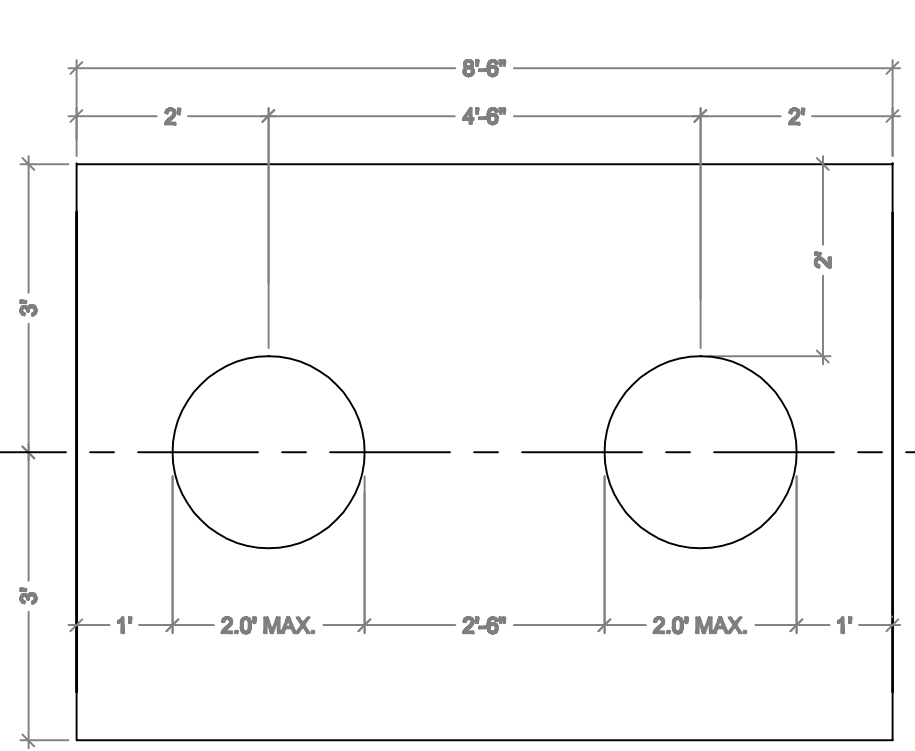
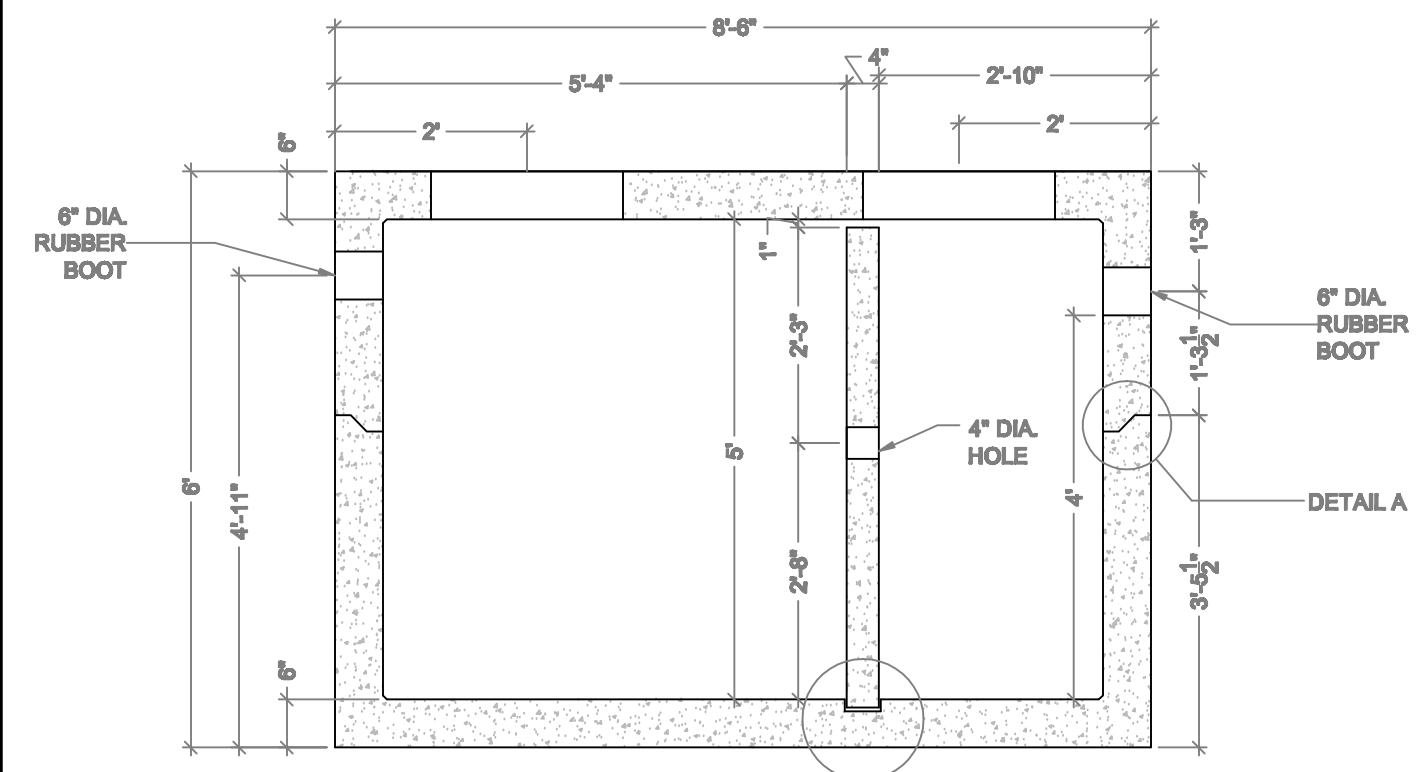


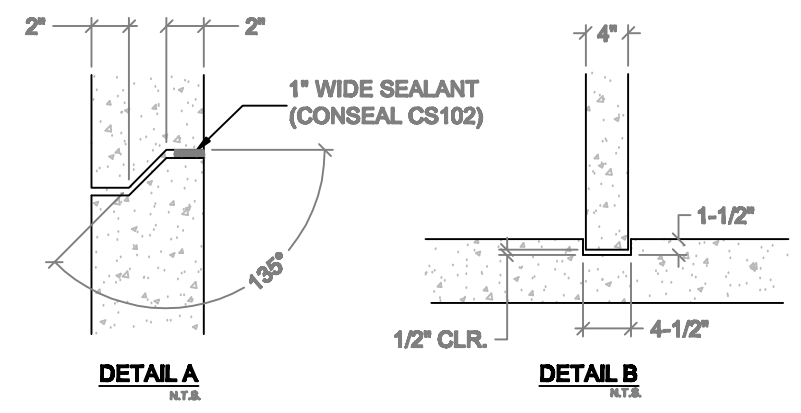
**TANK PLAN VIEW**



**TOP PLAN VIEW**

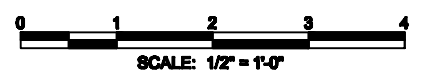


**SECTION A**



**DETAIL A**  
N.T.S.

**DETAIL B**  
N.T.S.



**JOSEPH A. AMON, P.E.**  
 FLORIDA PROFESSIONAL ENGINEER NO. 43576

DATE OF SIGNATURE

**1000 GALLON TANK DIMENSIONAL LAYOUT**

Ardaman & Associates, Inc.  
 Geotechnical, Environmental and Materials Consultants

**A & L SEPTIC TANKS**  
 9304 E. COLONIAL DR.  
 ORLANDO, FL 32817

DRAWN BY: JEB	CHECKED BY: JAA	DATE: 8-1-07
FILE NO. 07-9627	APPROVED BY:	FIGURE: S-1